



Ian Wusstig <ian.wusstig@dpw.guam.gov>

Fwd: Site map

info@guamtransportationprogram.com <info@guamtransportationprogram.com>

Thu, Nov 24, 2022 at 12:59
PM

To: Jeanette Meno

Dear Ms. Meno,

Thank you for your comment that we received on September 14, 2022 for the Port Authority of Guam Auto Lot Expansion and Shared Access Road Project, GU-PAG-0011 (010). The public comment period closed on October 12, 2022. We received one comment during the review period, your comment requesting for a layout plan for the proposed project. Please find the proposed layout plans attached.

[Quoted text hidden]

 **Port Authority Shared Access Road location plans.pdf**
5817K

REVISIONS			
REVISION	DATE	BY	DESCRIPTION

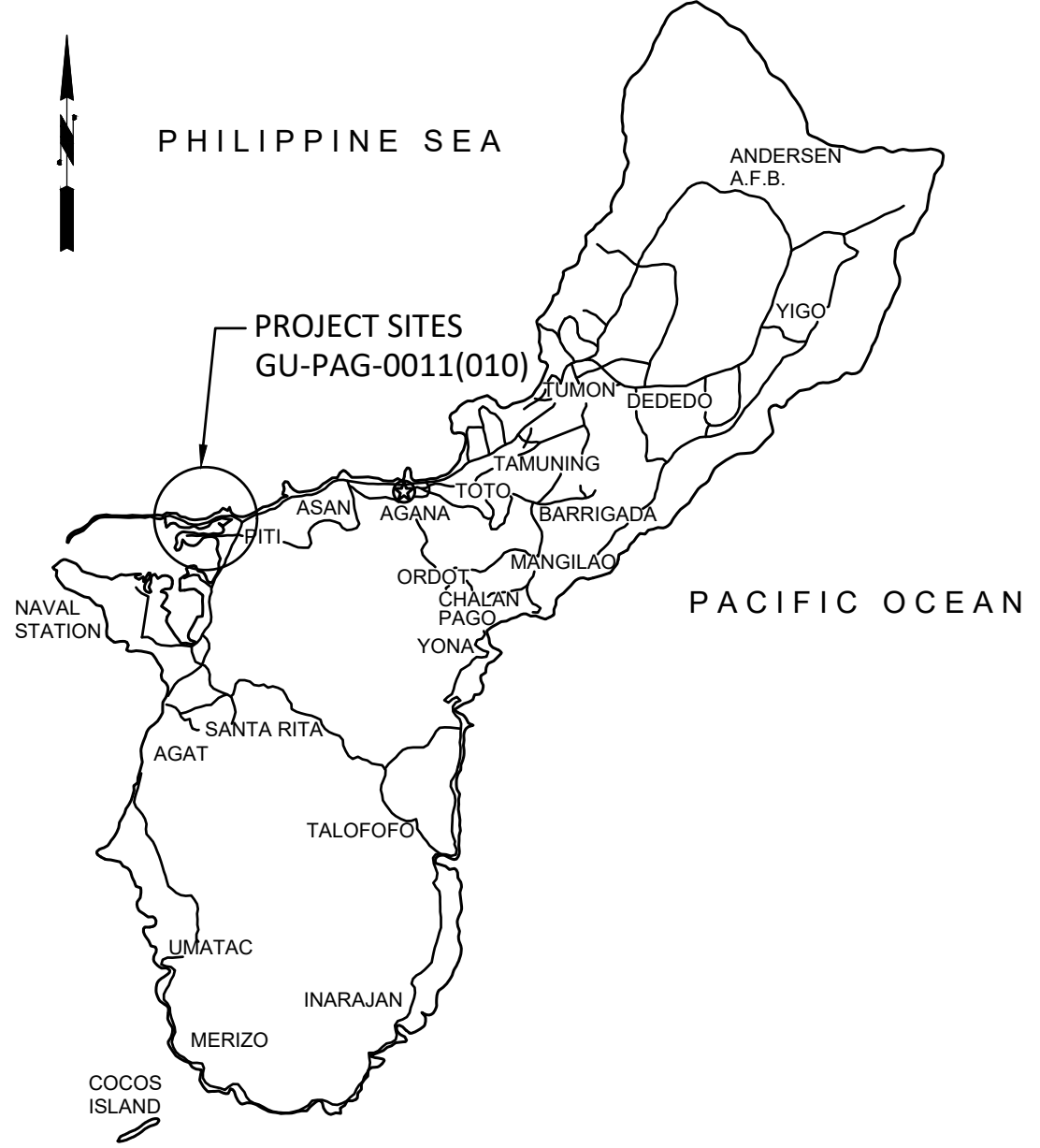
DEPARTMENT OF PUBLIC WORKS
DIVISION OF HIGHWAYS
GOVERNMENT OF GUAM

U.S. DEPARTMENT OF TRANSPORTATION
FEDERAL HIGHWAY ADMINISTRATION

PLANS FOR PROPOSED

PROJECT NO. GU-PAG-0011(010)
PORT AUTHORITY OF GUAM AUTO LOT EXPANSION
AND SHARED ACCESS ROAD PAVEMENT
VILLAGE OF PITI, GUAM

SHEET NO.	DRAWING NO.	DRAWING TITLE
GENERAL		
1	G-001	COVER SHEET, VICINITY MAP, PROJECT LOCATION, DRAWING LIST
2	G-002	GENERAL NOTES
3	G-003	ABBREVIATIONS, SYMBOLS, & LEGEND
CIVIL		
AUTOLOT EXPANSION		
4	G-100	OVERVIEW PLAN & STAGING AREA
5	C-101	EXISTING CONDITIONS PLAN
6	C-102	TEMP TESC / DEMO PLAN
7	C-103	SITE LAYOUT / HORIZONTAL CONTROL PLAN
8	C-104	GRADING & DRAINAGE PLAN
9	C-105	PAVING, STRIPING, & FENCING PLAN
10	C-201	SECTIONS & DETAILS - SECURITY GATES
11	C-202	SECTIONS & DETAILS - SECURITY FENCING
12	C-203	SECTIONS & DETAILS - PAVING & BOLLARDS
13	C-301	EXISTING SITE PHOTOS
CUSTOMS ACCESS ROAD		
14	C-401	EXISTING CONDITIONS
15	C-402	EXISTING CONDITIONS, - TEMP TESC, & DEMO PLAN
16	C-403	SITE LAYOUT / HORIZONTAL CONTROL PLAN
17	C-404	PROFILES - ACCESS ROAD
18	C-405	GRADING & DRAINAGE PLAN
19	C-406	PAVING, STRIPING, & SIGNAGE PLAN
20	C-501	SECTIONS & DETAILS - TESC
21	C-502	SECTIONS & DETAILS - HMA PAVEMENT
22	C-601	SECTIONS - EARTHWORK, SHEET 1
23	C-602	SECTIONS - EARTHWORK, SHEET 2
24	C-603	SECTIONS - EARTHWORK, SHEET 3
25	C-604	SECTIONS - EARTHWORK, SHEET 4
ELECTRICAL		
26	E-001	ELECTRICAL NOTES
27	E-101	ELECTRICAL DEMO PLAN
28	E-102	ELECTRICAL SITE PLAN
DPW STANDARD PLANS		
	157-01	SILT FENCE DETAILS (REFERENCE DRAWINGS)
	157-02	STABILIZED CONSTRUCTION ENTRANCE (REFERENCE DRAWINGS)
	634-02	2-LANE PAVEMENT MARKING
	635-03	LANE CLOSURE ON MULTI-LANE HIGHWAY



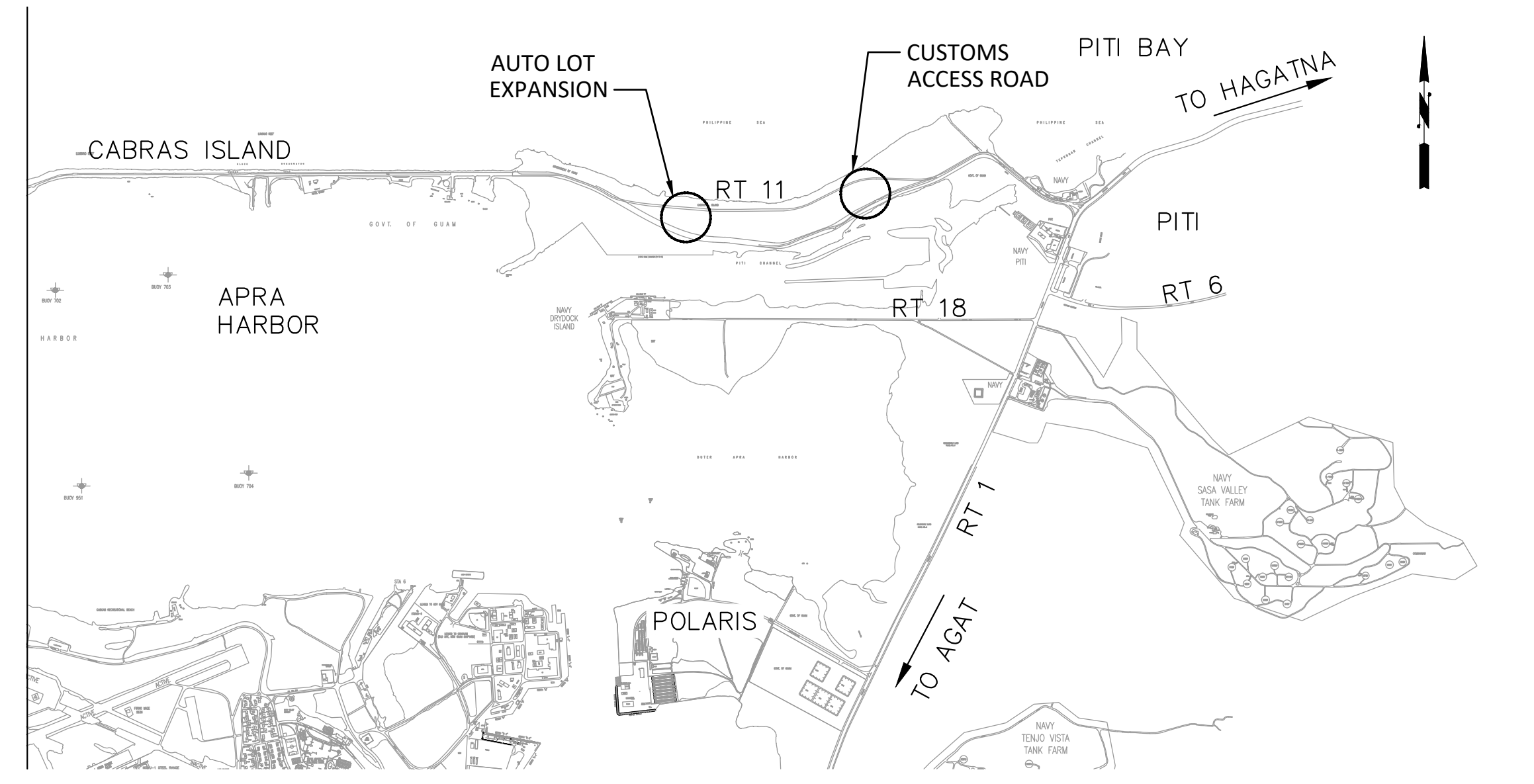
KEY MAP OF GUAM

PROJECT DESCRIPTION:
OPTION A WILL PROVIDE AN EXPANSION OF AN EXISTING AUTO LOT WHICH INCLUDES CLEARING AND GRUBBING, TEMPORARY EROSION AND SEDIMENTATION CONTROL PROVISIONS, MISC DEMOLITION, SAW-CUTTING EXISTING ASPHALT, GRADING AND EXCAVATION, BASE COURSE AGGREGATE, HMA PAVING, STRIPING, REPLACEMENT OF SECURITY FENCING AND DOUBLE-LEAF SECURITY GATES AND RELATED WORK, ALL IN ACCORDANCE WITH THE PROJECT PLANS, "STANDARD SPECIFICATIONS FOR CONSTRUCTION OF ROADS AND BRIDGES ON FEDERAL HIGHWAY PROJECTS, FP-03, U.S. CUSTOMARY UNITS," AND SPECIAL CONTRACT REQUIREMENTS (SCR'S).

OPTION B WILL PROVIDE A NEW ASPHALT PAVEMENT ACCESS ROADWAY WHICH INCLUDES CLEARING AND GRUBBING, TEMPORARY EROSION AND SEDIMENTATION CONTROL PROVISIONS, SAW-CUTTING EXISTING ASPHALT, GRADING AND EXCAVATION, BASE COURSE AGGREGATE, HMA PAVING, STRIPING, ALL IN ACCORDANCE WITH THE PROJECT PLANS, "STANDARD SPECIFICATIONS FOR CONSTRUCTION OF ROADS AND BRIDGES ON FEDERAL HIGHWAY PROJECTS, FP-03, U.S. CUSTOMARY UNITS," AND SCR'S.

SPECIFICATIONS:
"STANDARD SPECIFICATIONS FOR CONSTRUCTION OF ROADS AND BRIDGES ON FEDERAL HIGHWAY PROJECTS, FP-03, U.S. CUSTOMARY UNITS"

RESPONSIBLE MANAGING EMPLOYEE: BRADY NADELL
CIVIL: JAMES REED
ELECTRICAL: GENE ALBANO

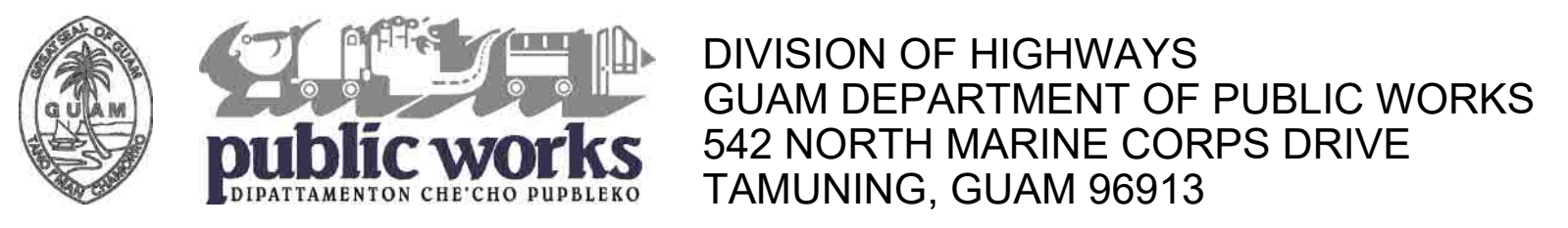


VICINITY MAP
SCALE: NTS

THESE PLANS WERE PREPARED BY



FOR



RECOMMENDED:

MICHAEL L. LANNING, P.E.
ACTING CHIEF ENGINEER, DEPARTMENT OF PUBLIC WORKS

DATE

APPROVED:

VINCENT P. ARRIOLA
DIRECTOR, DEPARTMENT OF PUBLIC WORKS

DATE

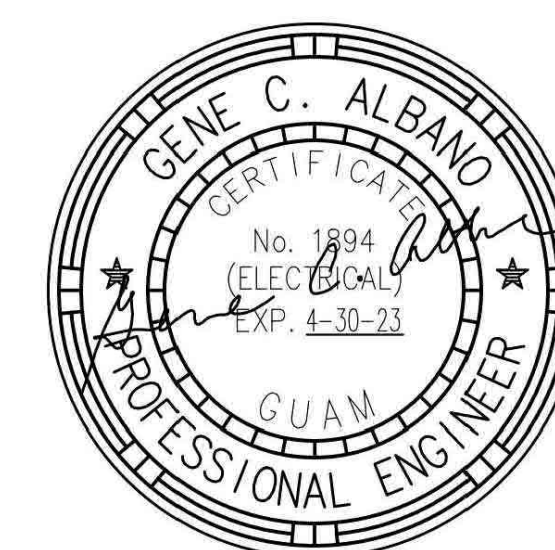
JUNE 24, 2022
FINAL SUBMITTAL



DATE: 06/24/2022
THIS WORK WAS PREPARED BY ME OR UNDER MY RESPONSIBLE CONTROL



DATE: 06/24/2022
THIS WORK WAS PREPARED BY ME OR UNDER MY RESPONSIBLE CONTROL

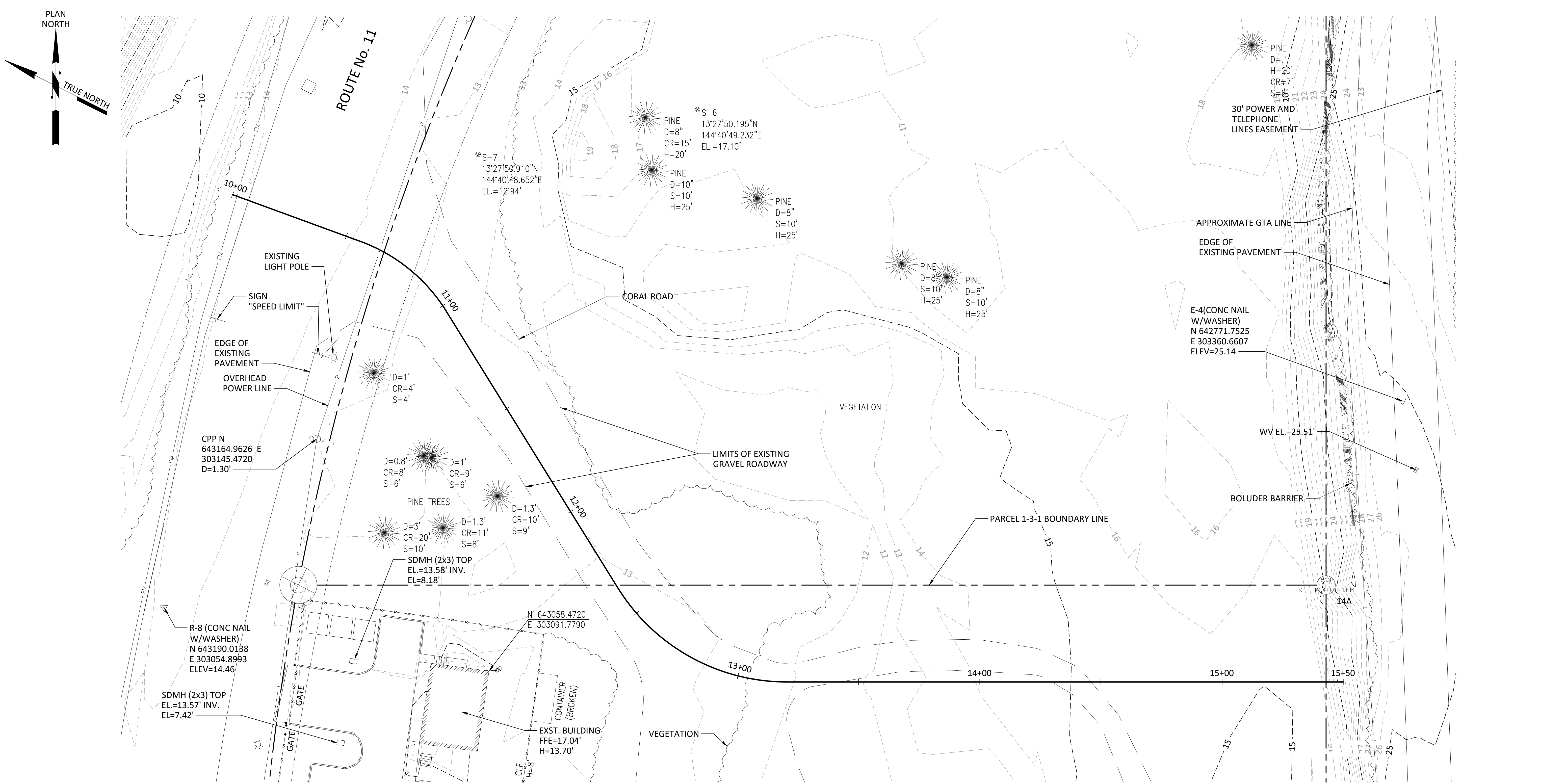


DATE: 06/24/2022
THIS WORK WAS PREPARED BY ME OR UNDER MY RESPONSIBLE CONTROL

DRAWING PLOT STAMP (HERE)

Copyright © WSP USA Inc. All Rights Reserved.

Last Saved by: US:JMF75471 on: Jun 24, 2022 12:56 PM File: C:\Users\US:JMF75471\WSP\0385\Federal Way Canal Projects - FV CADD Projects\19301001\CADD\DWG\02_C401.dwg



EXIST CONDITIONS PLAN
SCALE: 1" = 20'

NOTE:
SEE DRAWING C-403 FOR ALIGNMENT DATA



FINAL



DATE: 06/24/2022
THIS WORK WAS PREPARED BY ME
OR UNDER MY RESPONSIBLE CONTROL

DRAWING REVISIONS			
REVISION	DATE	BY	DESCRIPTION

DESIGNER VHN
DETAILER JDM
CHECKER JNR
DATE 06/24/22

THIS WORK WAS PREPARED BY

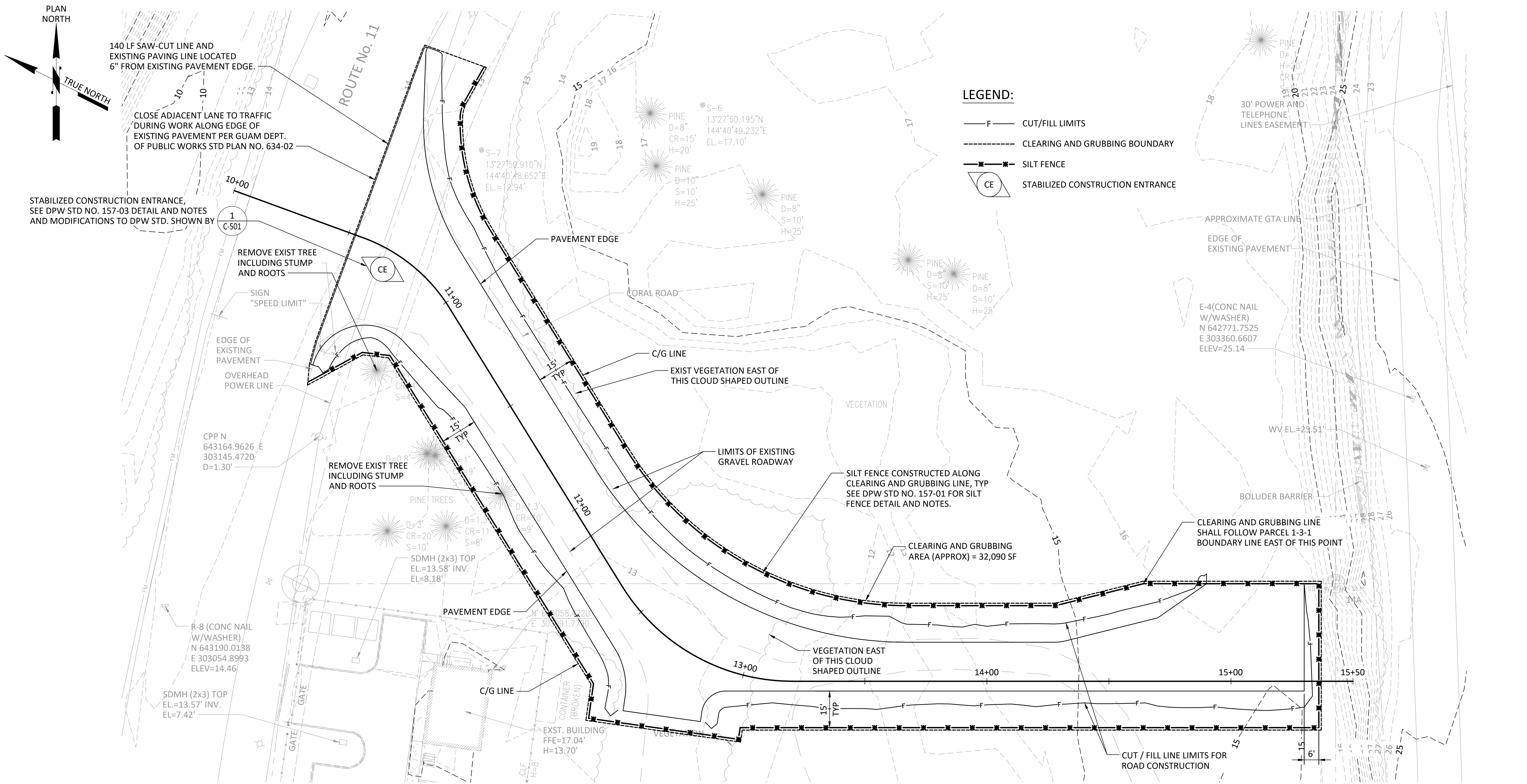
WSP USA Inc.
590 South Marine Corps Dr.
Suite 421
Tamuning, Guam 96913
TEL: (671) 646-2927

public works
DIPATTAMENTON CHE'CHO PUPBLERO

DIVISION OF HIGHWAYS
GUAM DEPARTMENT OF PUBLIC WORKS
542 N. MARINE CORPS DRIVE TAMUNING, GU 96913

DEPT OF PUBLIC WORKS HIGHWAY GOVT OF GUAM PORT AUTHORITY OF GUAM AUTO LOT EXPANSION AND SHARED ACCESS ROAD PAVEMENT EXISTING CONDITIONS (OPTION B)					
VILLAGE	TERRITORY	PROJECT NO.	DRAWING	SHEET NO.	TOTAL SHEETS
PITI	GUAM	GU-PAG-0011 (010)	C-401	14	28

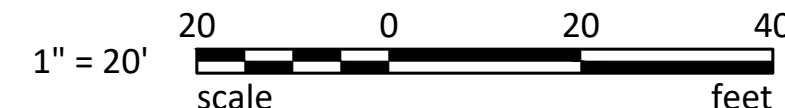
Copyright © WSP USA Inc. All Rights Reserved.
 File: C:\Users\USJMB\Federal Way Canal Projects - FW CADD Projects\19301001\CADD\DWG\02_C402.dwg
 Last Saved by: USJMB75471 on: Jun 24, 2022 12:57 PM



- LEGEND:**
- CUT/FILL LIMITS
 - CLEARING AND GRUBBING BOUNDARY
 - SILT FENCE
 - STABILIZED CONSTRUCTION ENTRANCE

EXIST CONDITIONS, TEMP TESC & DEMO PLAN
 SCALE: 1" = 20'

NOTE:
SEE DRAWING C-403 FOR ALIGNMENT DATA



FINAL

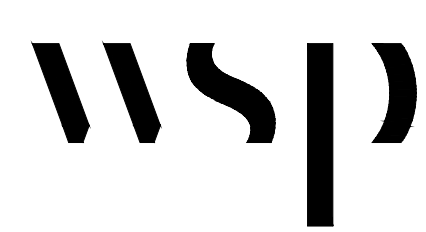


DATE: 06/24/2022
 THIS WORK WAS PREPARED BY ME
 OR UNDER MY RESPONSIBLE CONTROL


DRAWING REVISIONS			
REVISION	DATE	BY	DESCRIPTION

DESIGNER VHN
DETAILER JDM
CHECKER JNR
DATE 06/24/22

THIS WORK WAS PREPARED BY

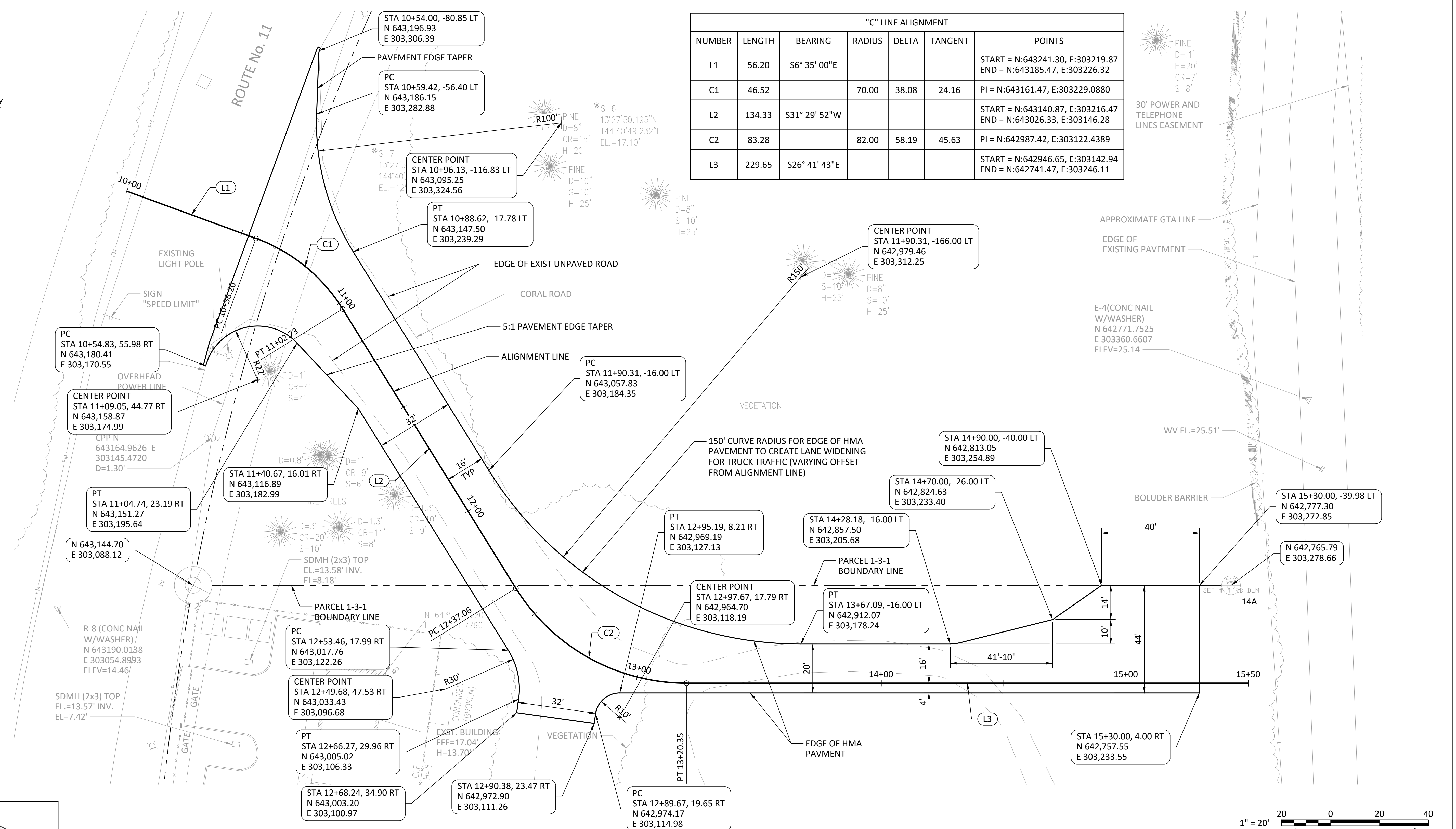
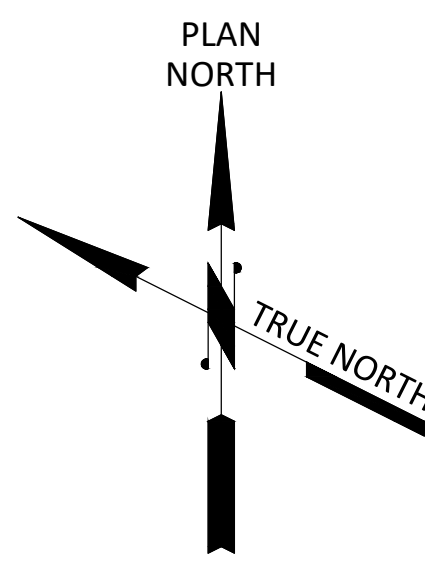


WSP USA Inc.
 590 South Marine Corps Dr.
 Suite 421
 Tamuning, Guam 96913
 TEL: (671) 646-2927

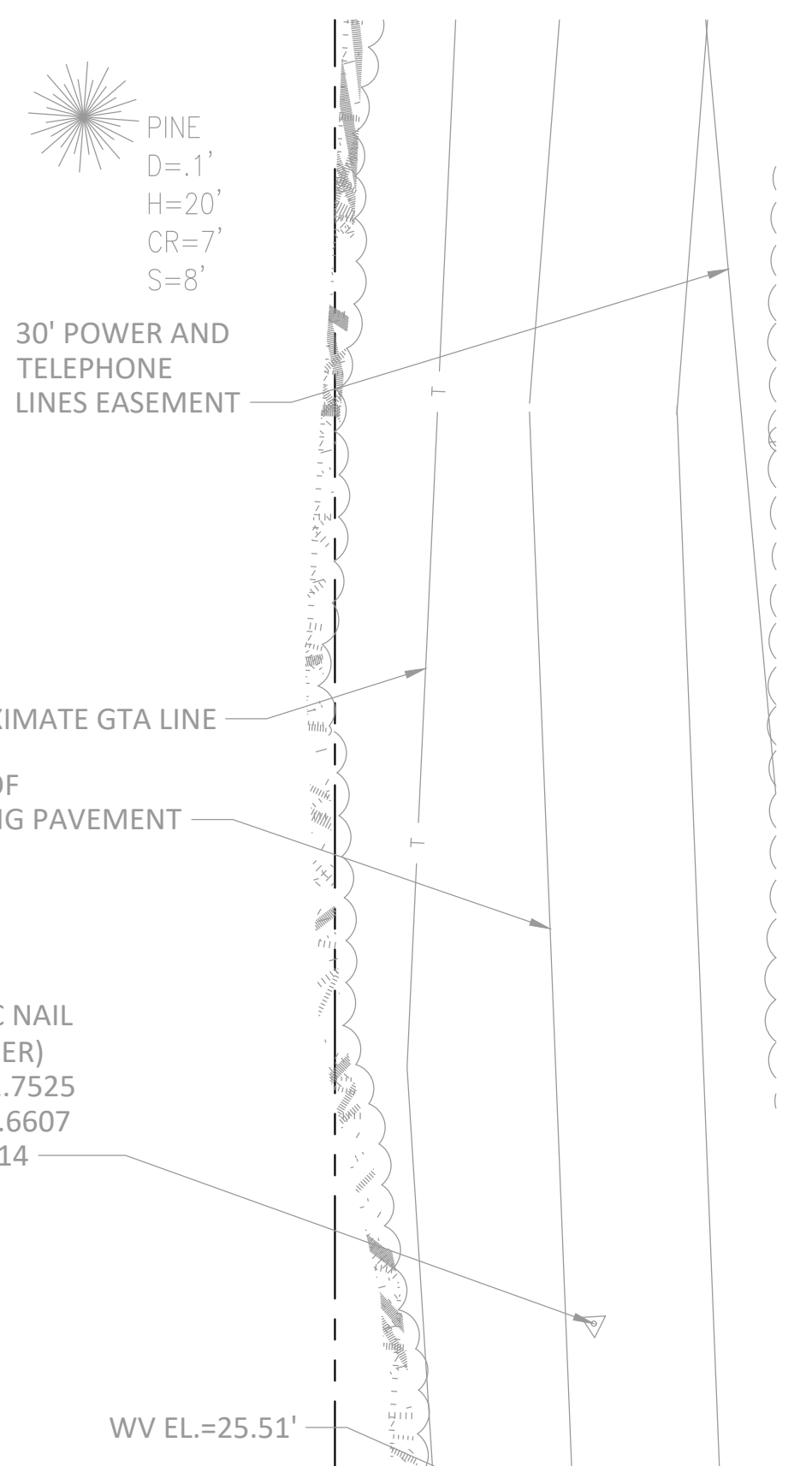


DIVISION OF HIGHWAYS
GUAM DEPARTMENT OF PUBLIC WORKS
 542 N. MARINE CORPS DRIVE TAMUNING, GU 96913

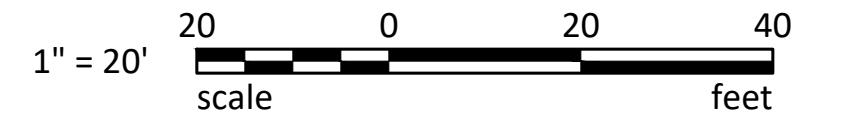
DEPT OF PUBLIC WORKS HIGHWAY GOVT OF GUAM PORT AUTHORITY OF GUAM AUTO LOT EXPANSION AND SHARED ACCESS ROAD PAVEMENT EXISTING CONDITIONS, TEMP TESC, & DEMO PLAN (OPTION B)					
VILLAGE	TERRITORY	PROJECT NO.	DRAWING	SHEET NO.	TOTAL SHEETS
PITI	GUAM	GU-PAG-0011 (010)	C-402	15	28



"C" LINE ALIGNMENT						
NUMBER	LENGTH	BEARING	RADIUS	DELTA	TANGENT	POINTS
L1	56.20	S6° 35' 00"E				START = N:643241.30, E:303219.87 END = N:643185.47, E:303226.32
C1	46.52		70.00	38.08	24.16	PI = N:643161.47, E:303229.0880
L2	134.33	S31° 29' 52"W				START = N:643140.87, E:303216.47 END = N:643026.33, E:303146.28
C2	83.28		82.00	58.19	45.63	PI = N:642987.42, E:303122.4389
L3	229.65	S26° 41' 43"E				START = N:642946.65, E:303142.94 END = N:642741.47, E:303246.11



SITE LAYOUT / HORIZONTAL CONTROL PLAN
SCALE: 1" = 20'



FINAL



DATE: 06/24/2022
THIS WORK WAS PREPARED BY ME OR UNDER MY RESPONSIBLE CONTROL

DRAWING REVISIONS			
REVISION	DATE	BY	DESCRIPTION

DESIGNER VHN
DETAILER JDM
CHECKER JNR
DATE 06/24/22

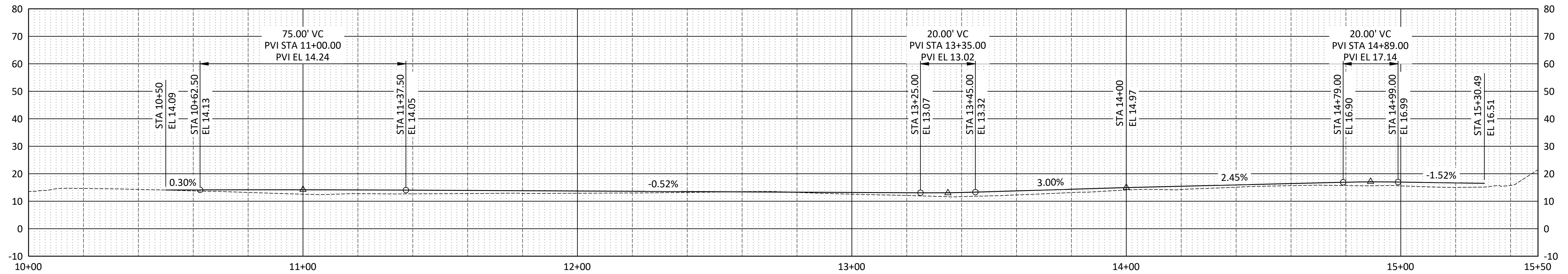
THIS WORK WAS PREPARED BY

WSP USA Inc.
590 South Marine Corps Dr.
Suite 421
Tamuning, Guam 96913
TEL: (671) 646-2927

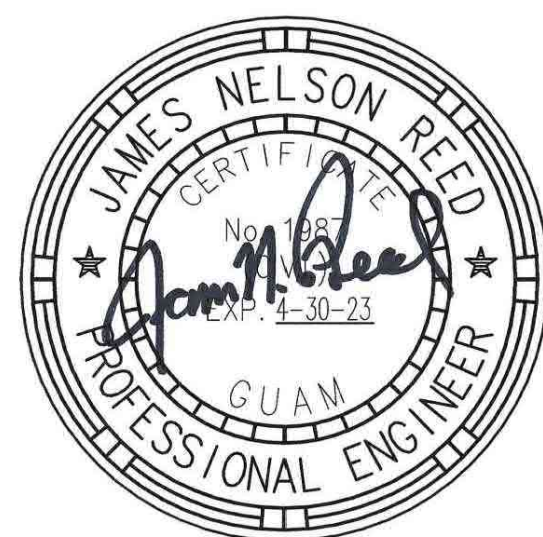
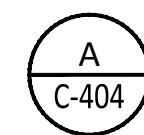
public works
DIPATTAMENTON CHE'CHO PUPBLEKO

DIVISION OF HIGHWAYS
GUAM DEPARTMENT OF PUBLIC WORKS
542 N. MARINE CORPS DRIVE TAMUNING, GU 96913

DEPT OF PUBLIC WORKS HIGHWAY GOVT OF GUAM PORT AUTHORITY OF GUAM AUTO LOT EXPANSION AND SHARED ACCESS ROAD PAVEMENT SITE LAYOUT / HORIZONTAL CONTROL PLAN (OPTION B)					
VILLAGE	TERRITORY	PROJECT NO.	DRAWING	SHEET NO.	TOTAL SHEETS
PITI	GUAM	GU-PAG-0011 (010)	C-403	16	28



PROFILE - ACCESS ROAD
SCALE: 1" = 20'



DATE: 06/24/2022
THIS WORK WAS PREPARED BY ME
OR UNDER MY RESPONSIBLE CONTROL

DRAWING REVISIONS			
REVISION	DATE	BY	DESCRIPTION

DESIGNER VHN
DETAILER JDM
CHECKER JNR
DATE 06/24/22

THIS WORK WAS PREPARED BY

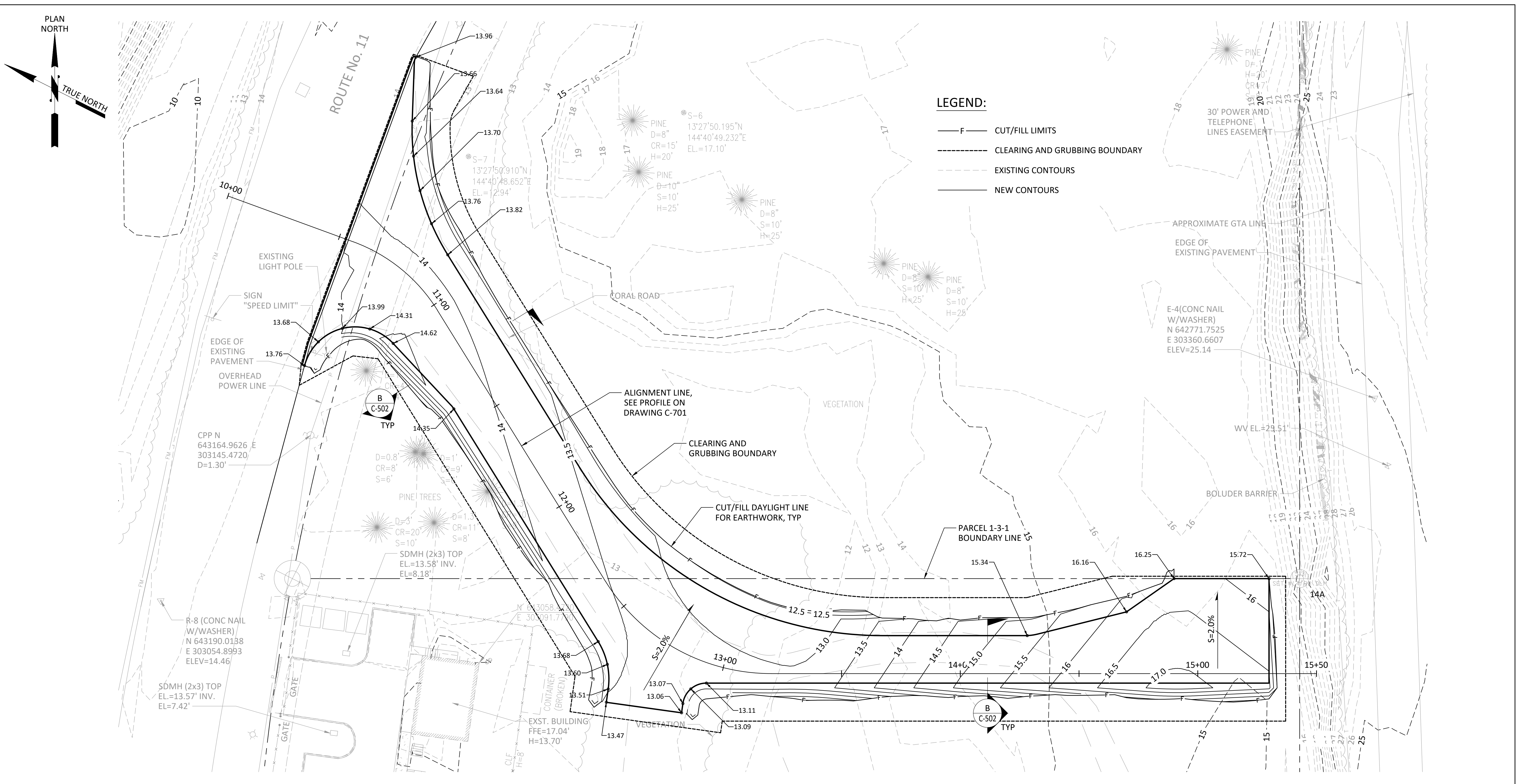
WSP USA Inc.
590 South Marine Corps Dr.
Suite 421
Tamuning, Guam 96913
TEL: (671) 646-2927

DIVISION OF HIGHWAYS
GUAM DEPARTMENT OF PUBLIC WORKS
542 N. MARINE CORPS DRIVE TAMUNING, GU 96913

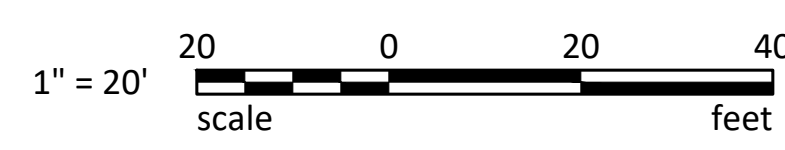
FINAL

DEPT OF PUBLIC WORKS HIGHWAY GOVT OF GUAM
PORT AUTHORITY OF GUAM AUTO LOT EXPANSION
AND SHARED ACCESS ROAD PAVEMENT
**PROFILES - ACCESS ROAD
(OPTION B)**

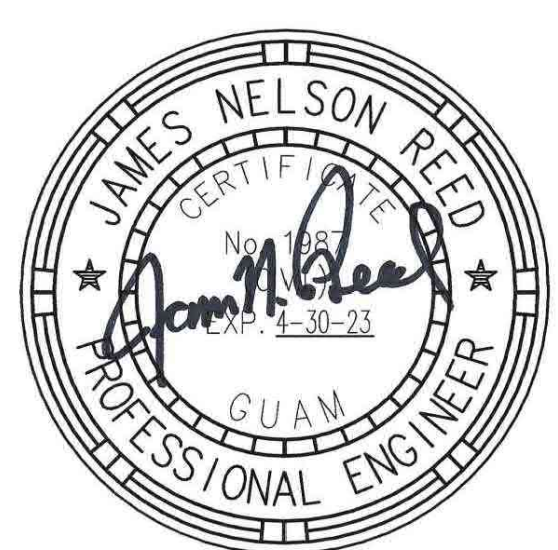
VILLAGE	TERRITORY	PROJECT NO.	DRAWING	SHEET NO.	TOTAL SHEETS
PITI	GUAM	GU-PAG-0011 (010)	C-404	17	28



GRADING & DRAINAGE PLAN
SCALE: 1" = 20'



FINAL




DATE: 06/24/2022
THIS WORK WAS PREPARED BY ME
OR UNDER MY RESPONSIBLE CONTROL

DRAWING REVISIONS			
REVISION	DATE	BY	DESCRIPTION

DESIGNER	VHN
DETAILER	JDM
CHECKER	JNR
DATE	06/24/22

THIS WORK WAS PREPARED BY



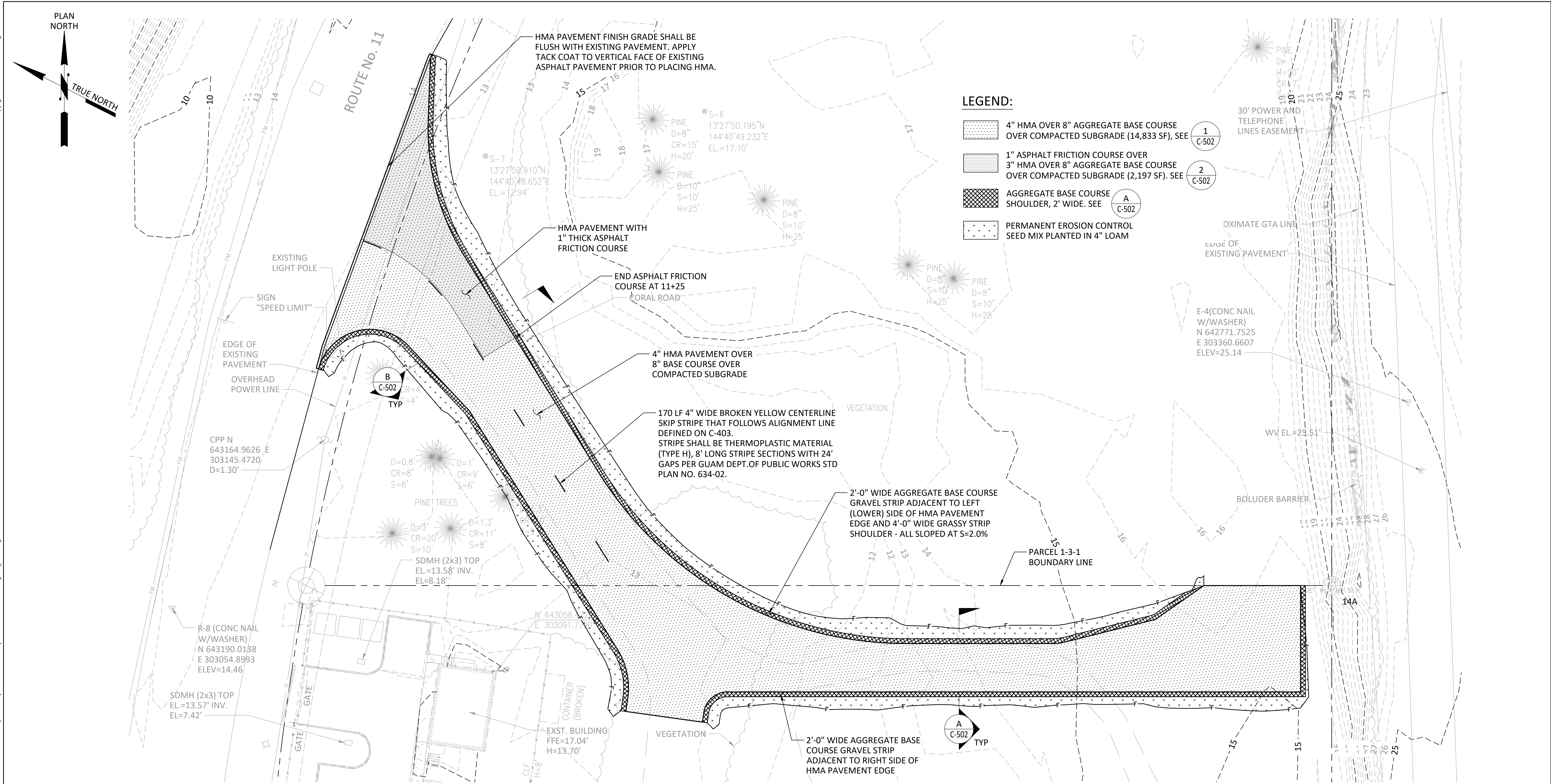
WSP USA Inc.
590 South Marine Corps Dr.
Suite 421
Tamuning, Guam 96913
TEL: (671) 646-2927



public works
DIPATTAMENTON CHE'CHO PUPBLERO

DIVISION OF HIGHWAYS
GUAM DEPARTMENT OF PUBLIC WORKS
542 N. MARINE CORPS DRIVE TAMUNING, GU 96913

DEPT OF PUBLIC WORKS HIGHWAY GOVT OF GUAM PORT AUTHORITY OF GUAM AUTO LOT EXPANSION AND SHARED ACCESS ROAD PAVEMENT GRADING & DRAINAGE PLAN (OPTION B)					
VILLAGE	TERRITORY	PROJECT NO.	DRAWING	SHEET NO.	TOTAL SHEETS
PITI	GUAM	GU-PAG-0011 (010)	C-405	18	28



LEGEND:

- 4" HMA OVER 8" AGGREGATE BASE COURSE OVER COMPACTED SUBGRADE (14,833 SF), SEE **1 C-502**
- 1" ASPHALT FRICTION COURSE OVER 3" HMA OVER 8" AGGREGATE BASE COURSE OVER COMPACTED SUBGRADE (2,197 SF). SEE **2 C-502**
- AGGREGATE BASE COURSE SHOULDER, 2' WIDE. SEE **A C-502**
- PERMANENT EROSION CONTROL SEED MIX PLANTED IN 4" LOAM

PAVING, STRIPING, & SIGNAGE PLAN
SCALE: 1" = 20'



FINAL



DATE: 06/24/2022
THIS WORK WAS PREPARED BY ME OR UNDER MY RESPONSIBLE CONTROL

DRAWING REVISIONS			
REVISION	DATE	BY	DESCRIPTION

DESIGNER VHN
DETAILER JDM
CHECKER JNR
DATE 06/24/22

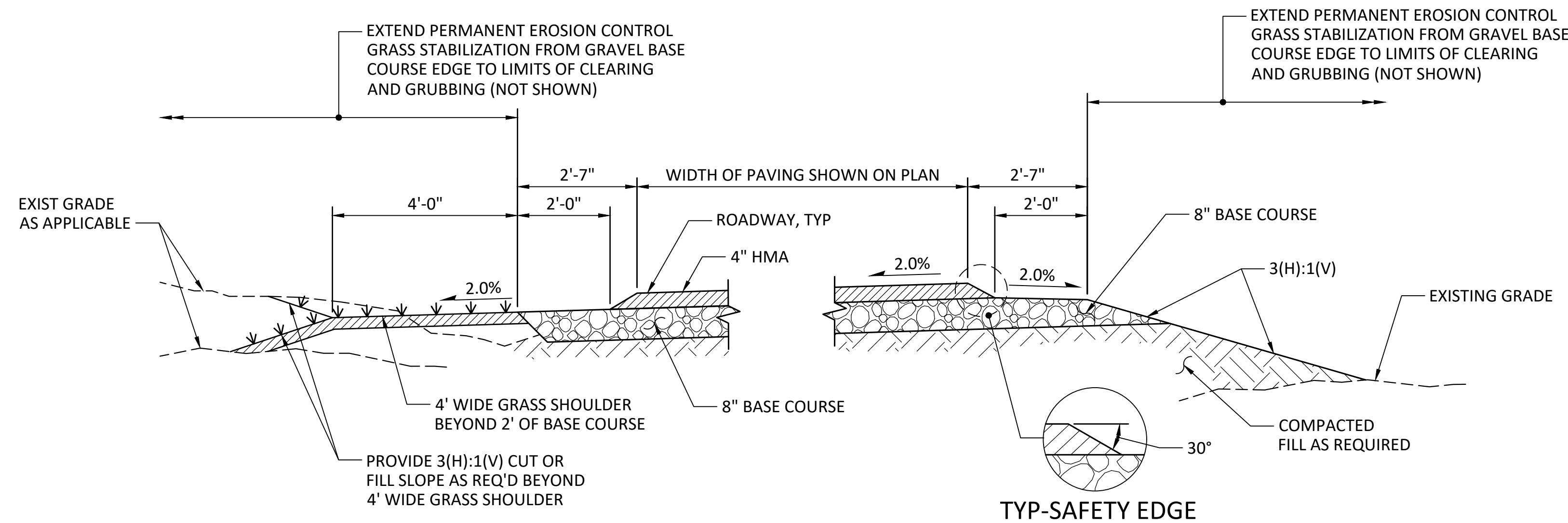
THIS WORK WAS PREPARED BY

WSP USA Inc.
590 South Marine Corps Dr.
Suite 421
Tamuning, Guam 96913
TEL: (671) 646-2927

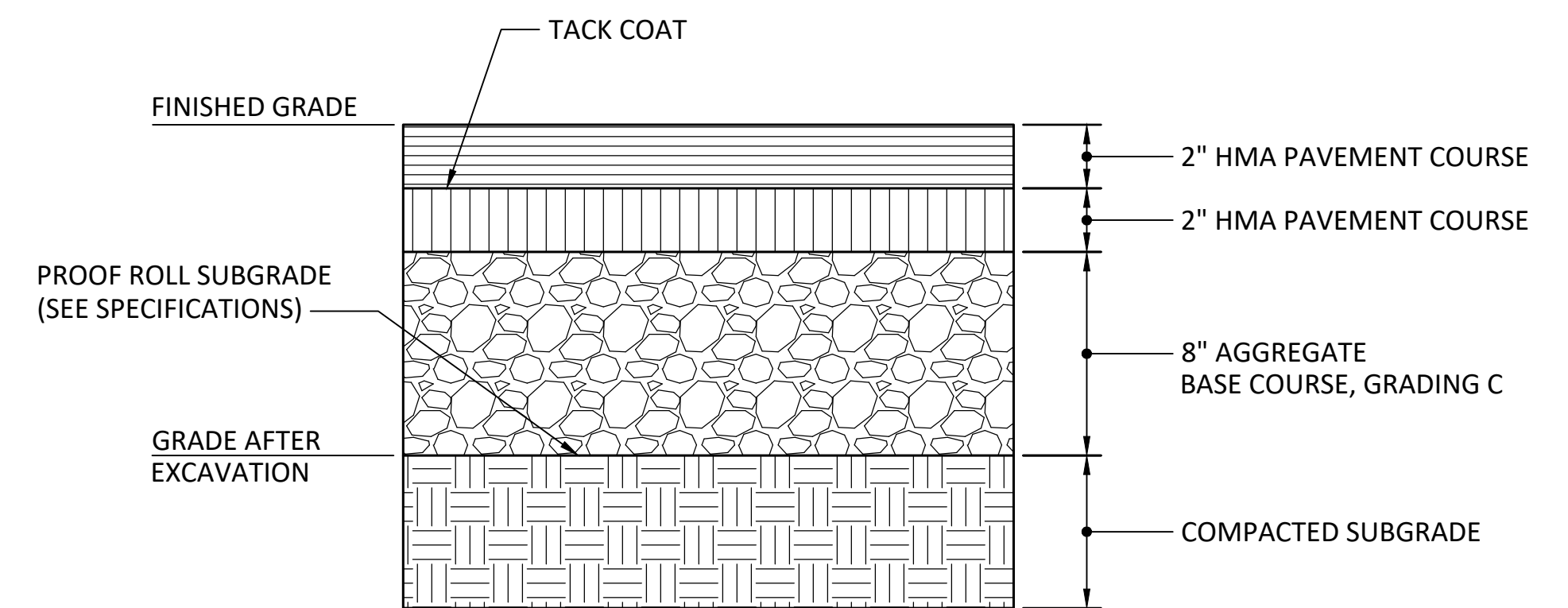
public works
DIPATTAMENTON CHE'CHO PUPBLEKO

DIVISION OF HIGHWAYS
GUAM DEPARTMENT OF PUBLIC WORKS
542 N. MARINE CORPS DRIVE TAMUNING, GU 96913

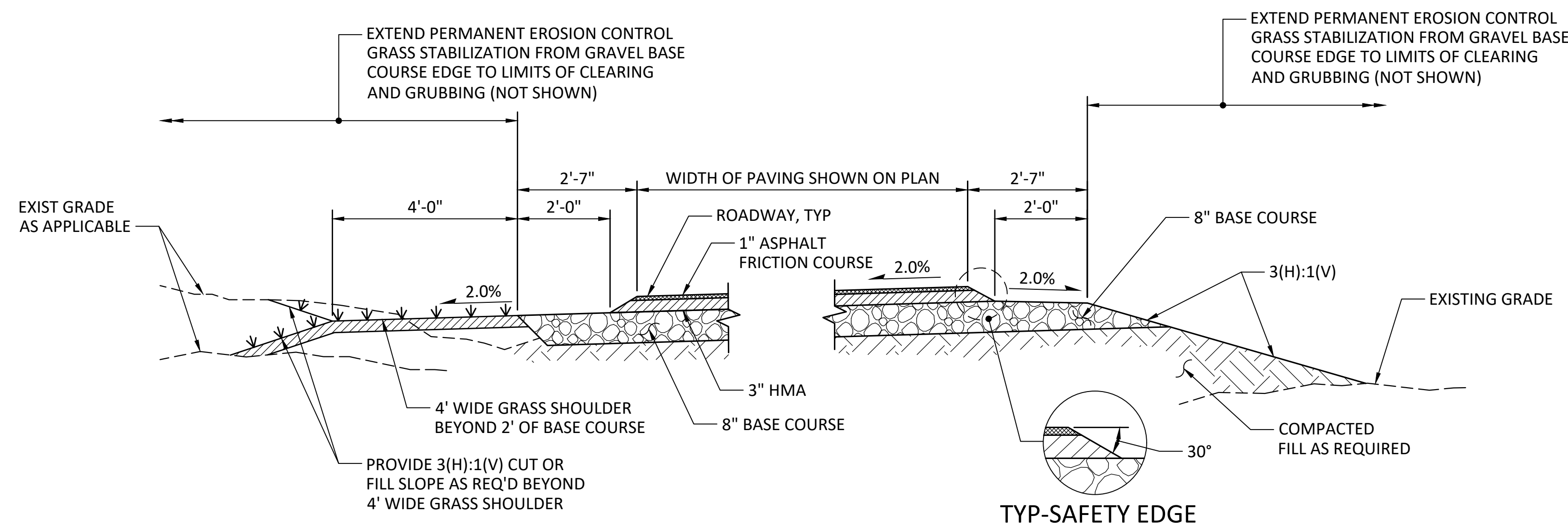
DEPT OF PUBLIC WORKS HIGHWAY GOVT OF GUAM PORT AUTHORITY OF GUAM AUTO LOT EXPANSION AND SHARED ACCESS ROAD PAVEMENT PAVING, STRIPING, & SIGNAGE PLAN (OPTION B)					
VILLAGE	TERRITORY	PROJECT NO.	DRAWING	SHEET NO.	TOTAL SHEETS
PITI	GUAM	GU-PAG-0011 (010)	C-406	19	28



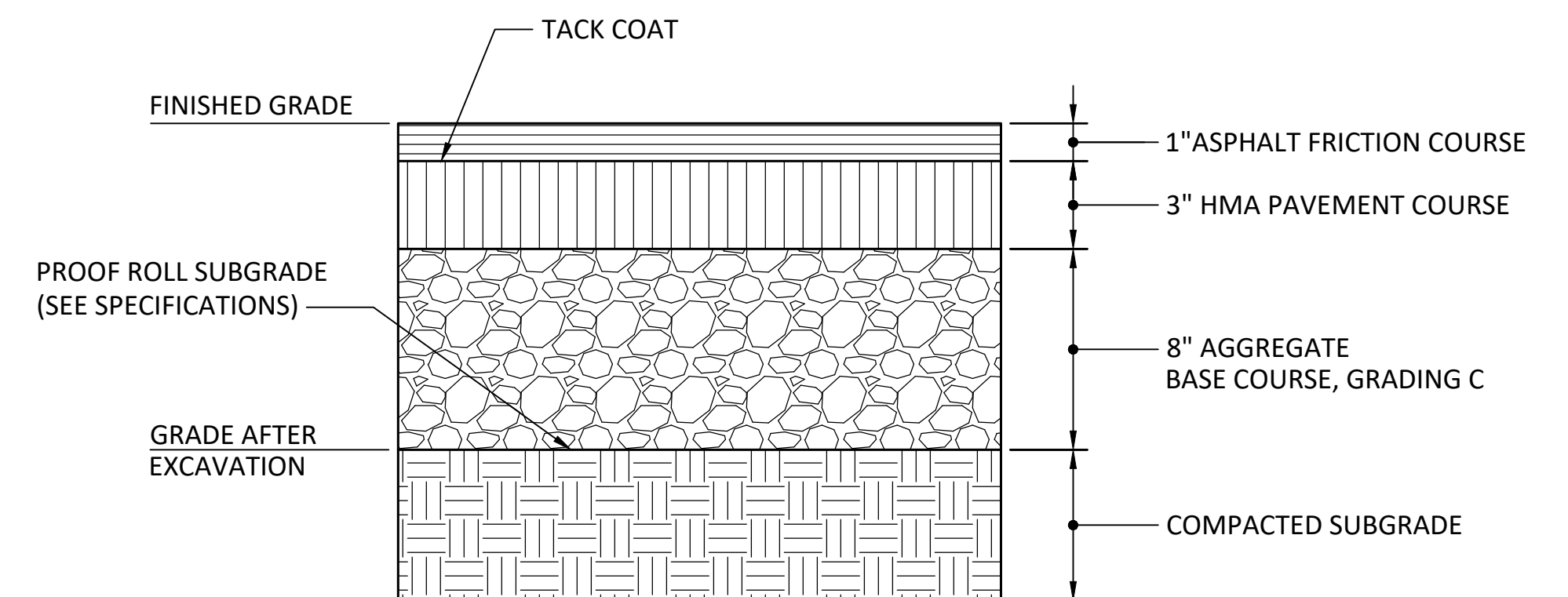
A
SECTION - HMA ACCESS ROAD
SCALE: 1/2" = 1'-0"
C-404
C-405



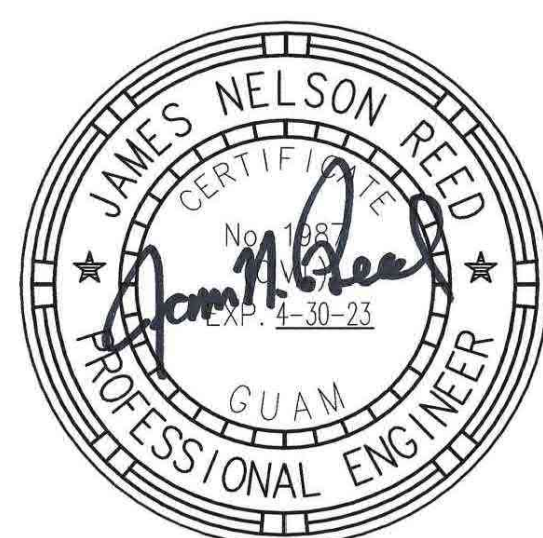
1
DETAIL - TYP ACCESS ROAD HMA PAVEMENT SECTION
SCALE: NTS
C-405



B
SECTION - HMA ACCESS ROAD
SCALE: 1/2" = 1'-0"
C-404
C-405



2
DETAIL - ACCESS ROAD HMA W/ FRICTION COURSE
SCALE: NTS
C-405



DATE: 06/24/2022
THIS WORK WAS PREPARED BY ME OR UNDER MY RESPONSIBLE CONTROL

DRAWING REVISIONS			
REVISION	DATE	BY	DESCRIPTION

DESIGNER VHN
DETAILER JDM
CHECKER JNR
DATE 06/24/22

THIS WORK WAS PREPARED BY

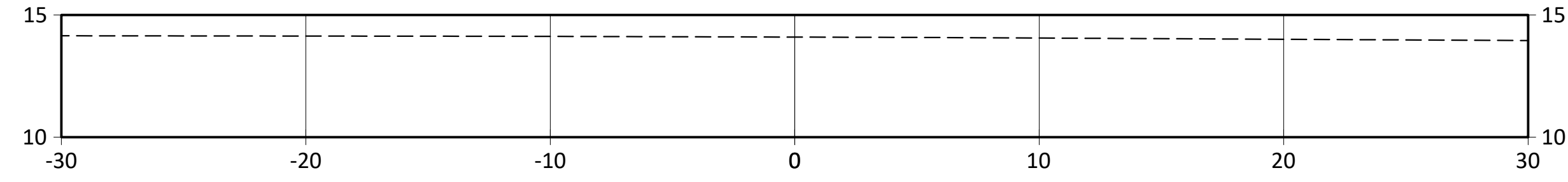
WSP USA Inc.
590 South Marine Corps Dr.
Suite 421
Tamuning, Guam 96913
TEL: (671) 646-2927

DIVISION OF HIGHWAYS
GUAM DEPARTMENT OF PUBLIC WORKS
542 N. MARINE CORPS DRIVE TAMUNING, GU 96913

DEPT OF PUBLIC WORKS HIGHWAY GOVT OF GUAM PORT AUTHORITY OF GUAM AUTO LOT EXPANSION AND SHARED ACCESS ROAD PAVEMENT SECTIONS & DETAILS - HMA PAVEMENT (OPTION B)					
VILLAGE	TERRITORY	PROJECT NO.	DRAWING	SHEET NO.	TOTAL SHEETS
PITI	GUAM	GU-PAG-0011 (010)	C-502	21	28

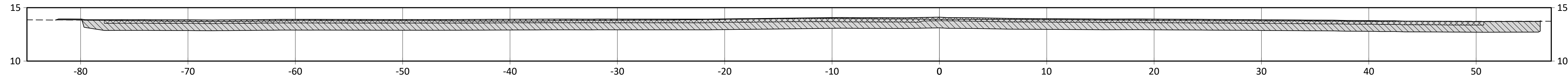
FINAL

Copyright © WSP USA Inc. All Rights Reserved.



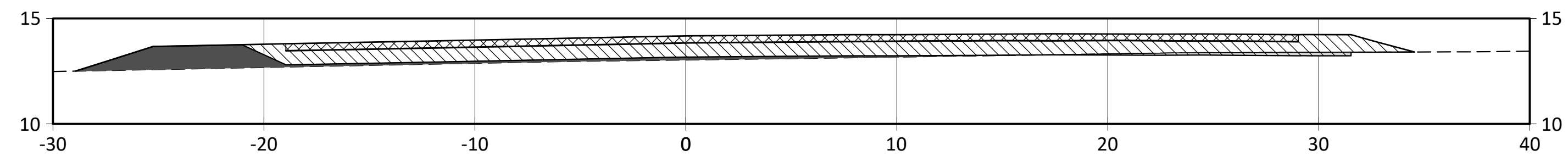
STA "C" 10+50

STA 10+50		
TYPE	AREA	VOL
CUT	0.00	0.00
FILL	0.00	0.00



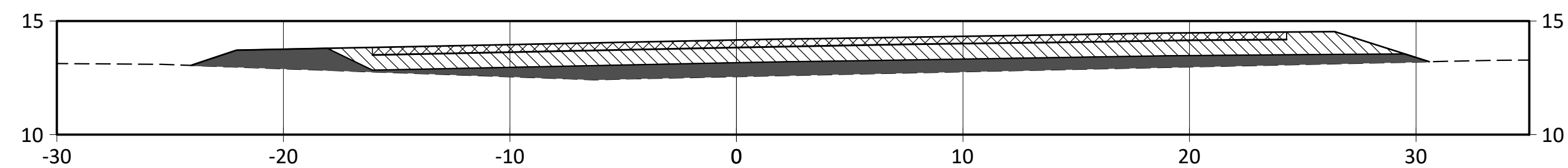
STA "C" 10+55

STA 10+55		
TYPE	AREA	VOL
CUT	123.76	11.46
FILL	0.23	0.02



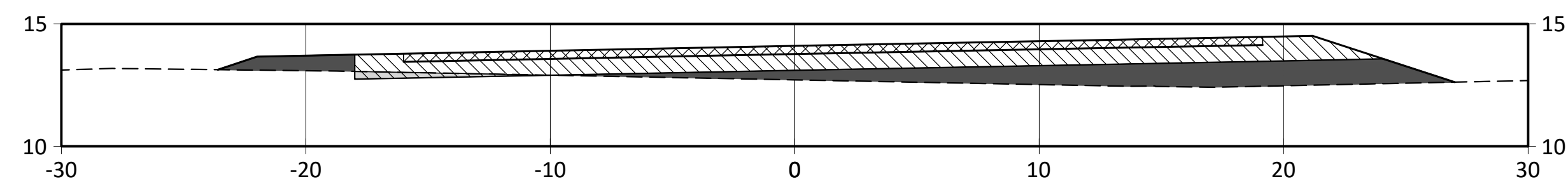
STA "C" 10+85

STA 10+85		
TYPE	AREA	VOL
CUT	1.53	79.52
FILL	11.06	7.90



STA "C" 11+00

STA 11+00		
TYPE	AREA	VOL
CUT	0.00	0.27
FILL	27.83	11.32



STA "C" 11+25

STA 11+25		
TYPE	AREA	VOL
CUT	1.27	0.60
FILL	25.63	24.53

VOLUME

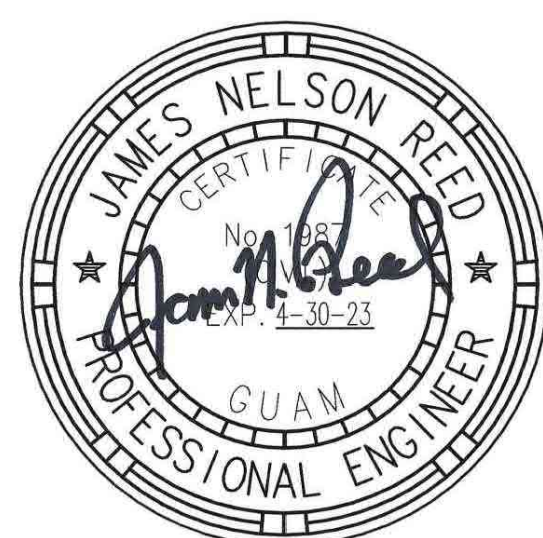
SURFACE TO SURFACE COMPOSITE:
 CUT VOLUME = 251 CY
 FILL VOLUME = 150 CY
 8" AGGREGATE BASE COURSE VOLUME = 944 TONS
 4" HMA ASPHALT PAVEMENT VOLUME = 430 TONS

LEGEND

- COMPACTED FILL MATERIAL
- 4" HMA ASPHALT PAVEMENT
- EXCAVATED CUT
- 8" AGGREGATE BASE COURSE

NOTE:
 QUANTITIES SHOWN ABOVE ARE FROM CIVIL 3D MODEL AND ACCURATELY REPRESENT MATERIAL VOLUMES. DO NOT USE SECTION QUANTITIES SHOWN TO PERFORM END-AREA VOLUME CALCULATIONS DUE TO SIGNIFICANT WIDTH VARIATIONS BETWEEN STATIONS SHOWN, SMALL RADIUS CURVES AND RADII USED AT INTERSECTION.

FINAL



DATE: 06/24/2022
 THIS WORK WAS PREPARED BY ME OR UNDER MY RESPONSIBLE CONTROL

DRAWING REVISIONS			
REVISION	DATE	BY	DESCRIPTION

DESIGNER VHN
DETAILER JDM
CHECKER JNR
DATE 06/24/22

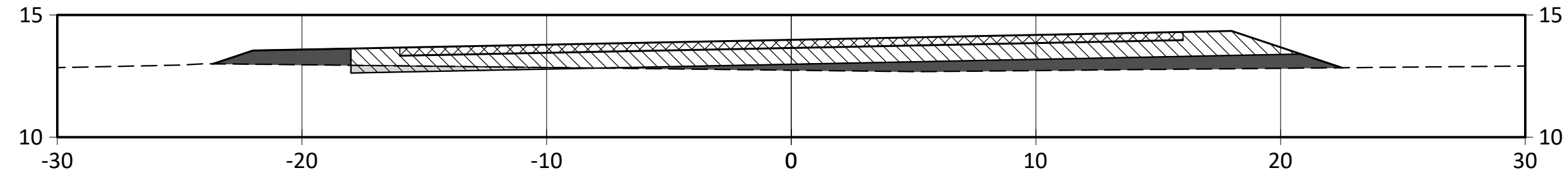
THIS WORK WAS PREPARED BY

WSP USA Inc.
 590 South Marine Corps Dr.
 Suite 421
 Tamuning, Guam 96913
 TEL: (671) 646-2927

DIVISION OF HIGHWAYS
 GUAM DEPARTMENT OF PUBLIC WORKS
 542 N. MARINE CORPS DRIVE TAMUNING, GU 96913

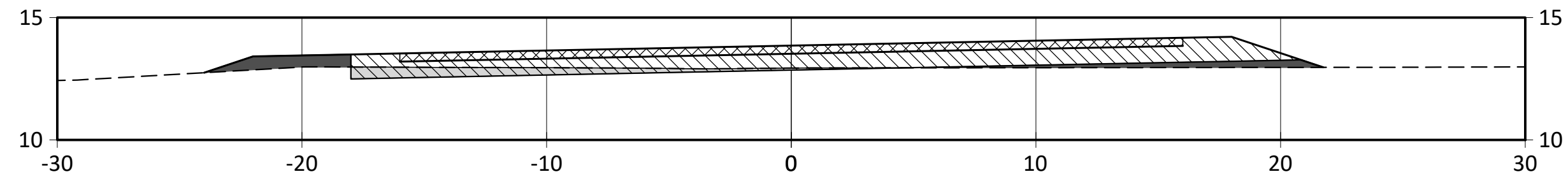
DEPT OF PUBLIC WORKS HIGHWAY GOVT OF GUAM PORT AUTHORITY OF GUAM AUTO LOT EXPANSION AND SHARED ACCESS ROAD PAVEMENT SECTIONS - EARTHWORK, SHEET 1 (OPTION B)					
VILLAGE	TERRITORY	PROJECT NO.	DRAWING	SHEET NO.	TOTAL SHEETS
PITI	GUAM	GU-PAG-0011 (010)	C-601	22	28

Last Saved by: US:JMF75471 on: Jun 24, 2022 12:58 PM File: C:\Users\US:JMF75471\WSP\0385\Federal Way Canal Projects - FV\CADD\Projects\19301001\CADD\DWG\02_C601-C604.dwg



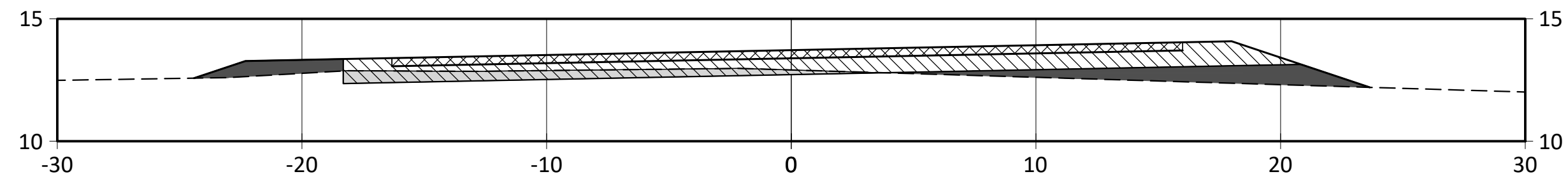
STA "C" 11+50

STA 11+50		
TYPE	AREA	VOL
CUT	1.60	1.33
FILL	13.77	18.24



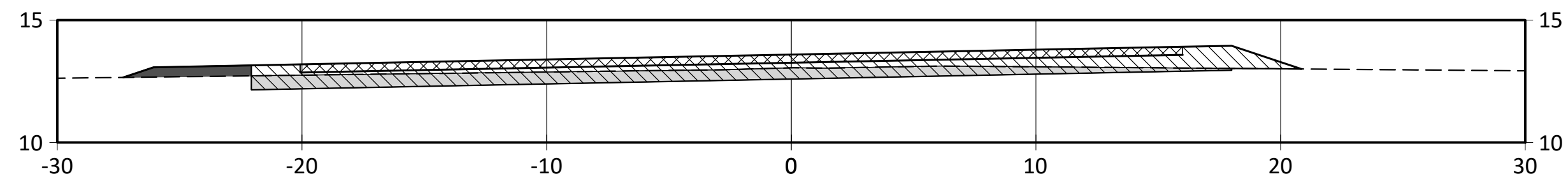
STA "C" 11+75

STA 11+75		
TYPE	AREA	VOL
CUT	5.06	3.09
FILL	5.20	8.78



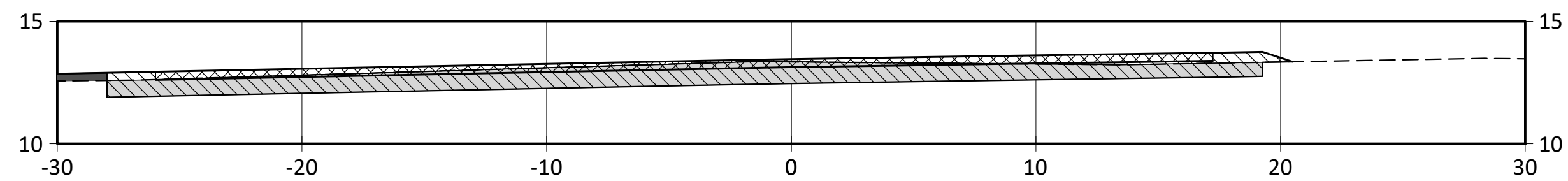
STA "C" 12+00

STA 12+00		
TYPE	AREA	VOL
CUT	7.03	5.60
FILL	11.43	7.70



STA "C" 12+25

STA 12+25		
TYPE	AREA	VOL
CUT	16.44	10.87
FILL	1.89	6.17



STA "C" 12+50

STA 12+50		
TYPE	AREA	VOL
CUT	35.40	23.21
FILL	0.62	0.98

VOLUME

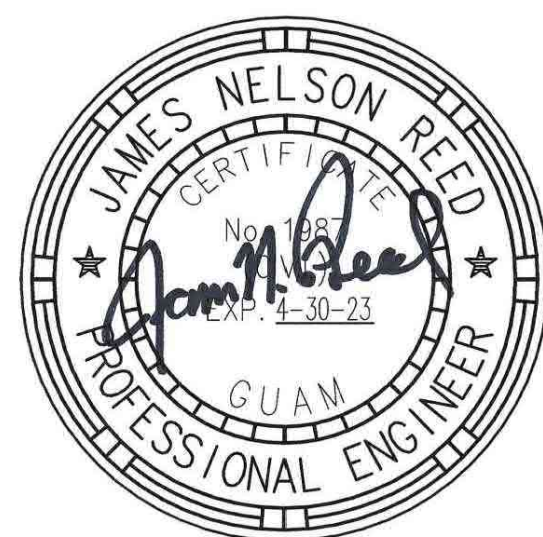
SURFACE TO SURFACE COMPOSITE:
 CUT VOLUME = 251 CY
 FILL VOLUME = 150 CY
 8" AGGREGATE BASE COURSE VOLUME = 944 TONS
 4" HMA ASPHALT PAVEMENT VOLUME = 430 TONS

LEGEND

- COMPACTED FILL MATERIAL
- 4" HMA ASPHALT PAVEMENT
- EXCAVATED CUT
- 8" AGGREGATE BASE COURSE

NOTE:
 QUANTITIES SHOWN ABOVE ARE FROM CIVIL 3D MODEL AND ACCURATELY REPRESENT MATERIAL VOLUMES. DO NOT USE SECTION QUANTITIES SHOWN TO PERFORM END-AREA VOLUME CALCULATIONS DUE TO SIGNIFICANT WIDTH VARIATIONS BETWEEN STATIONS SHOWN, SMALL RADIUS CURVES AND RADII USED AT INTERSECTION.

FINAL



DATE: 06/24/2022
 THIS WORK WAS PREPARED BY ME OR UNDER MY RESPONSIBLE CONTROL

DRAWING REVISIONS			
REVISION	DATE	BY	DESCRIPTION

DESIGNER VHN
DETAILER JDM
CHECKER JNR
DATE 06/24/22

THIS WORK WAS PREPARED BY

WSP USA Inc.
 590 South Marine Corps Dr.
 Suite 421
 Tamuning, Guam 96913
 TEL: (671) 646-2927

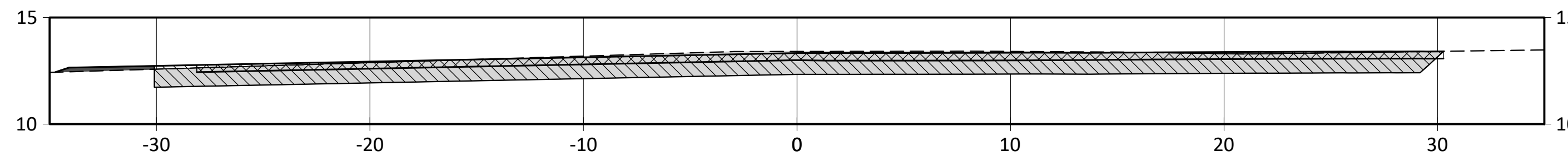
public works
 DIPATTAMENTON CHE'CHO PUPBLERO

DIVISION OF HIGHWAYS
 GUAM DEPARTMENT OF PUBLIC WORKS
 542 N. MARINE CORPS DRIVE TAMUNING, GU 96913

DEPT OF PUBLIC WORKS HIGHWAY GOVT OF GUAM PORT AUTHORITY OF GUAM AUTO LOT EXPANSION AND SHARED ACCESS ROAD PAVEMENT SECTIONS - EARTHWORK, SHEET 2 (OPTION B)					
VILLAGE	TERRITORY	PROJECT NO.	DRAWING	SHEET NO.	TOTAL SHEETS
PITI	GUAM	GU-PAG-0011 (010)	C-602	23	28

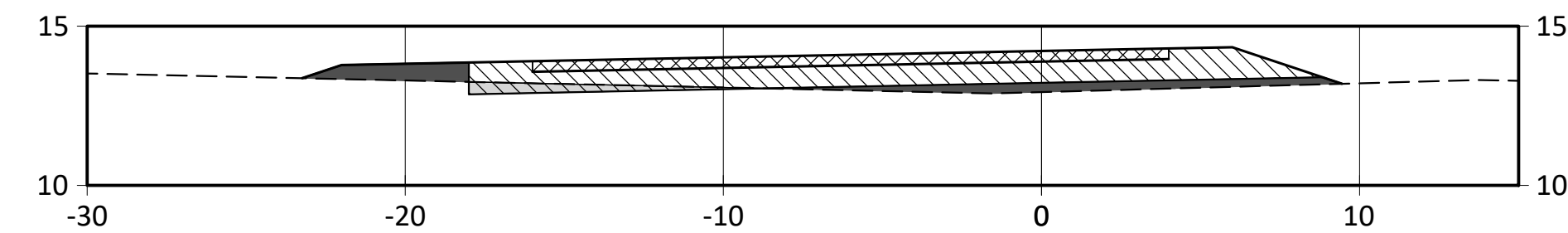
Copyright © WSP USA Inc. All Rights Reserved.

Last Saved by: US:JMF75471 on: Jun 24, 2022 12:58 PM File: C:\Users\US:JMF75471\WSP\0385\Federal Way Canal Projects - FV\CADD\Projects\19301001\CADD\Drawings\02_C601-C604.dwg



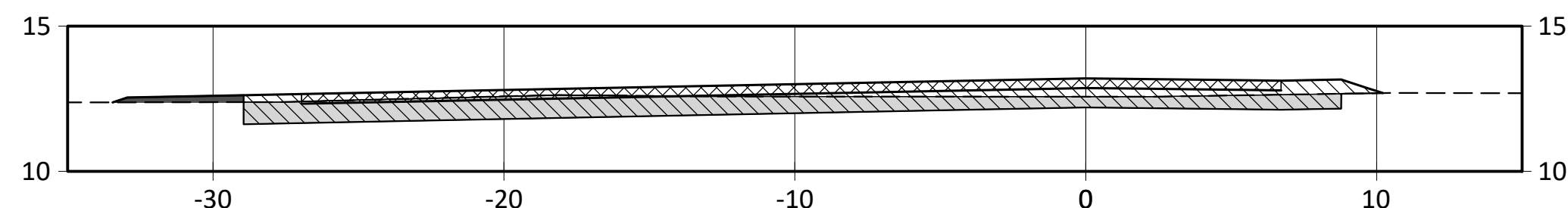
STA "C" 12+75

STA 12+75		
TYPE	AREA	VOL
CUT	60.12	43.22
FILL	0.77	0.40



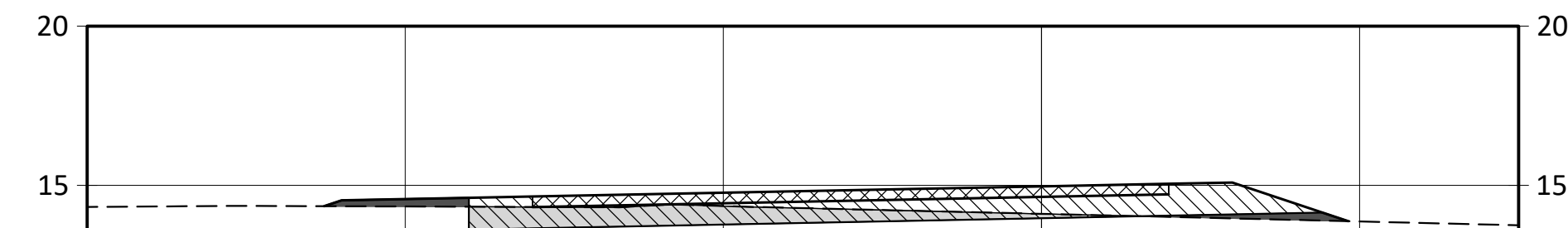
STA "C" 13+75

STA 13+75		
TYPE	AREA	VOL
CUT	1.82	0.84
FILL	6.25	12.84



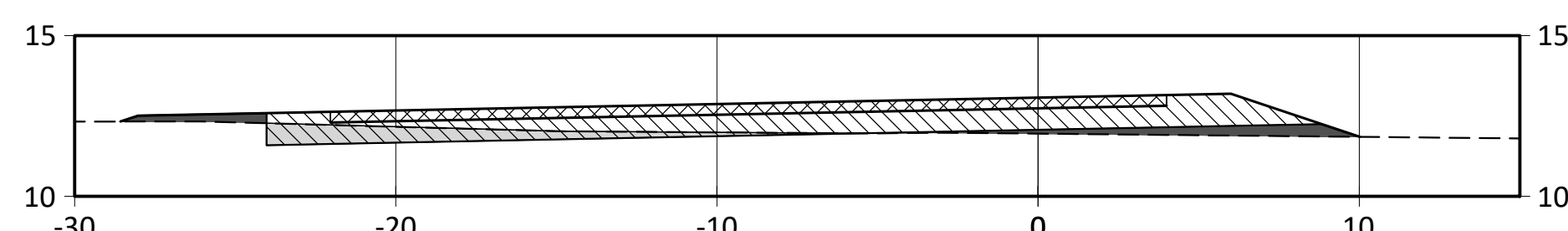
STA "C" 13+00

STA 13+00		
TYPE	AREA	VOL
CUT	22.44	36.66
FILL	0.85	0.46



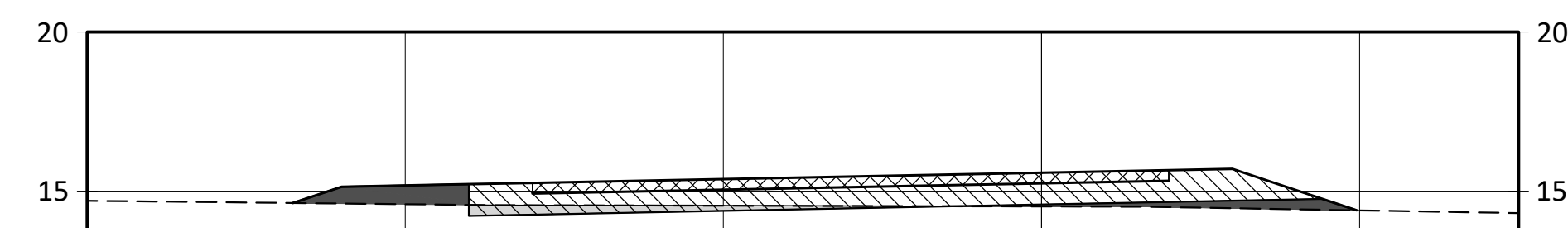
STA "C" 14+00

STA 14+00		
TYPE	AREA	VOL
CUT	8.98	5.00
FILL	1.80	3.73



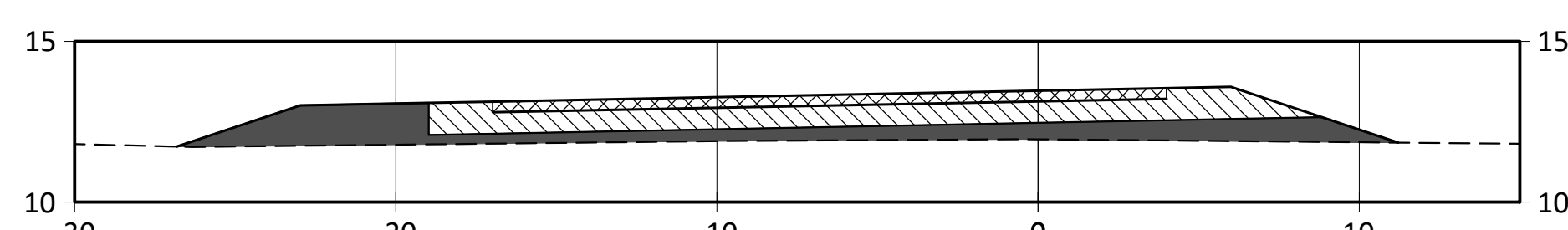
STA "C" 13+25

STA 13+25		
TYPE	AREA	VOL
CUT	5.45	11.17
FILL	3.70	1.93



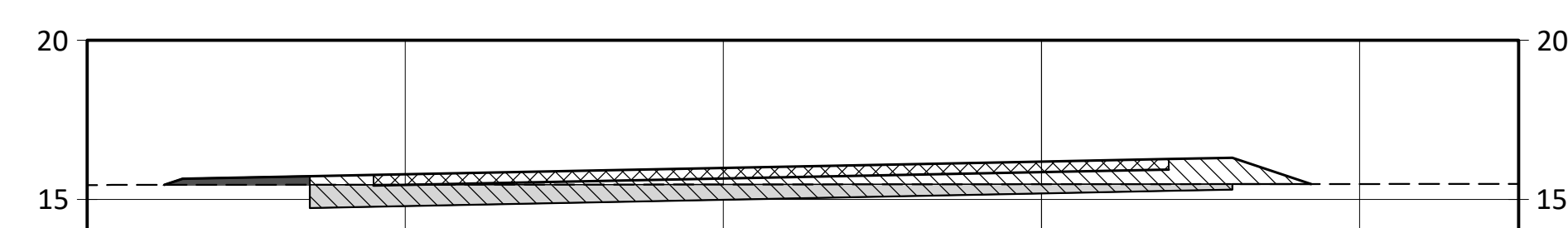
STA "C" 14+25

STA 14+25		
TYPE	AREA	VOL
CUT	2.61	5.37
FILL	4.69	3.01



STA "C" 13+50

STA 13+50		
TYPE	AREA	VOL
CUT	0.00	2.52
FILL	21.50	11.66



STA "C" 14+50

STA 14+50		
TYPE	AREA	VOL
CUT	13.11	7.28
FILL	0.97	2.62

VOLUME

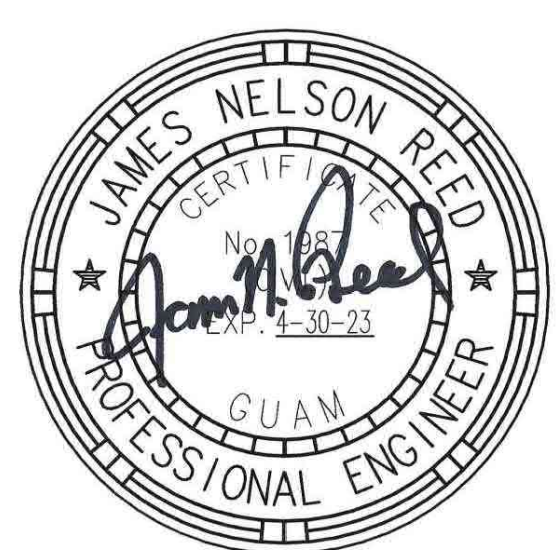
SURFACE TO SURFACE COMPOSITE:
 CUT VOLUME = 251 CY
 FILL VOLUME = 150 CY
 8" AGGREGATE BASE COURSE VOLUME = 944 TONS
 4" HMA ASPHALT PAVEMENT VOLUME = 430 TONS

LEGEND

- COMPACTED FILL MATERIAL
- 4" HMA ASPHALT PAVEMENT
- EXCAVATED CUT
- 8" AGGREGATE BASE COURSE

NOTE:
 QUANTITIES SHOWN ABOVE ARE FROM CIVIL 3D MODEL AND ACCURATELY REPRESENT MATERIAL VOLUMES. DO NOT USE SECTION QUANTITIES SHOWN TO PERFORM END-AREA VOLUME CALCULATIONS DUE TO SIGNIFICANT WIDTH VARIATIONS BETWEEN STATIONS SHOWN, SMALL RADIUS CURVES AND RADII USED AT INTERSECTION.

FINAL



DATE: 06/24/2022
 THIS WORK WAS PREPARED BY ME OR UNDER MY RESPONSIBLE CONTROL

DRAWING REVISIONS			
REVISION	DATE	BY	DESCRIPTION

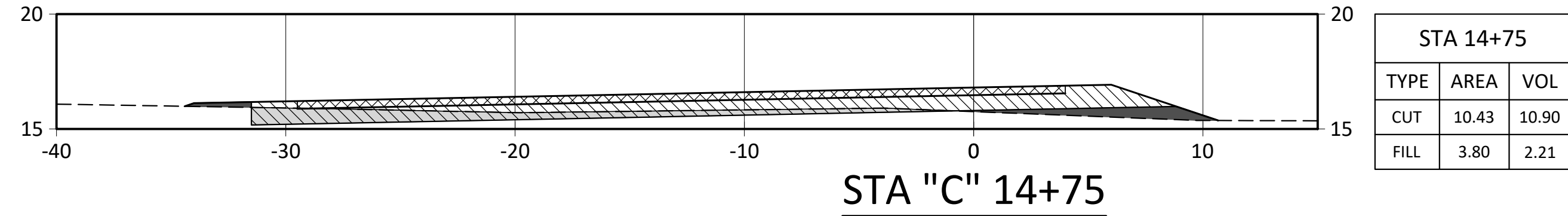
DESIGNER VHN
DETAILER JDM
CHECKER JNR
DATE 06/24/22

THIS WORK WAS PREPARED BY

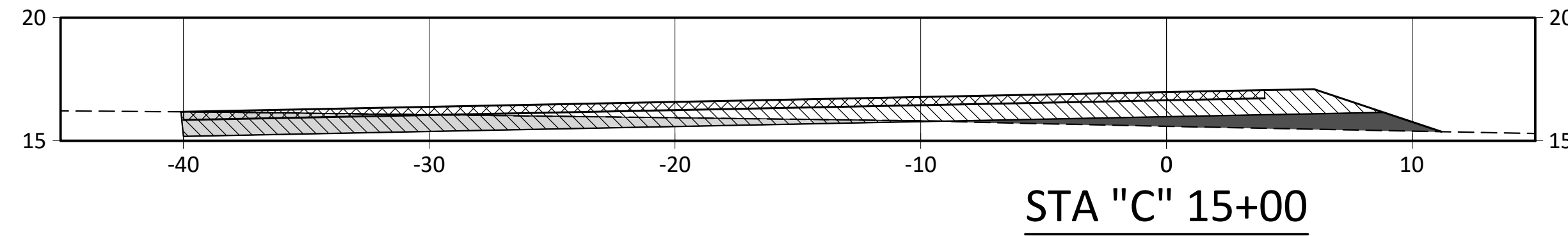
WSP USA Inc.
 590 South Marine Corps Dr.
 Suite 421
 Tamuning, Guam 96913
 TEL: (671) 646-2927

DIVISION OF HIGHWAYS
 GUAM DEPARTMENT OF PUBLIC WORKS
 542 N. MARINE CORPS DRIVE TAMUNING, GU 96913

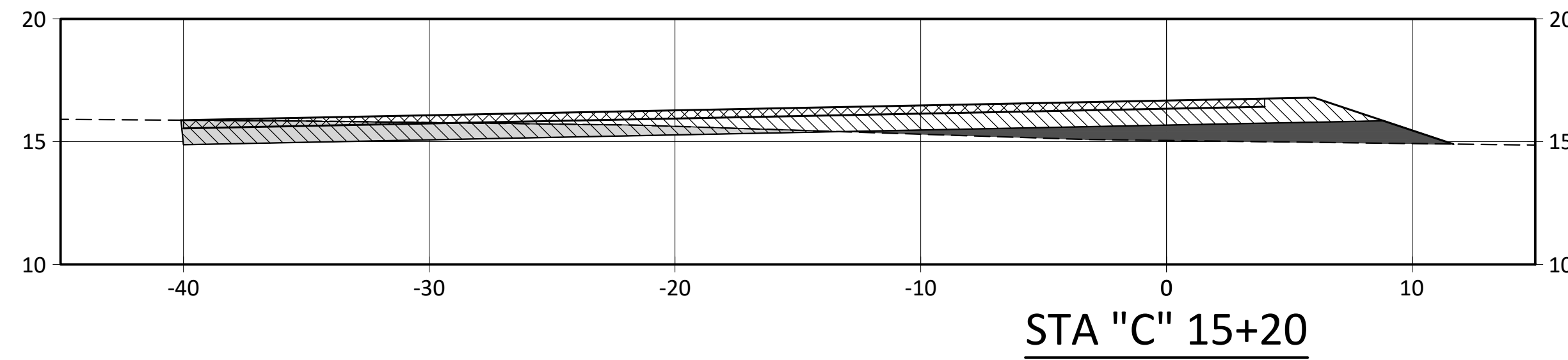
DEPT OF PUBLIC WORKS HIGHWAY GOVT OF GUAM PORT AUTHORITY OF GUAM AUTO LOT EXPANSION AND SHARED ACCESS ROAD PAVEMENT SECTIONS - EARTHWORK, SHEET 3 (OPTION B)					
VILLAGE	TERRITORY	PROJECT NO.	DRAWING	SHEET NO.	TOTAL SHEETS
PITI	GUAM	GU-PAG-0011 (010)	C-603	24	28



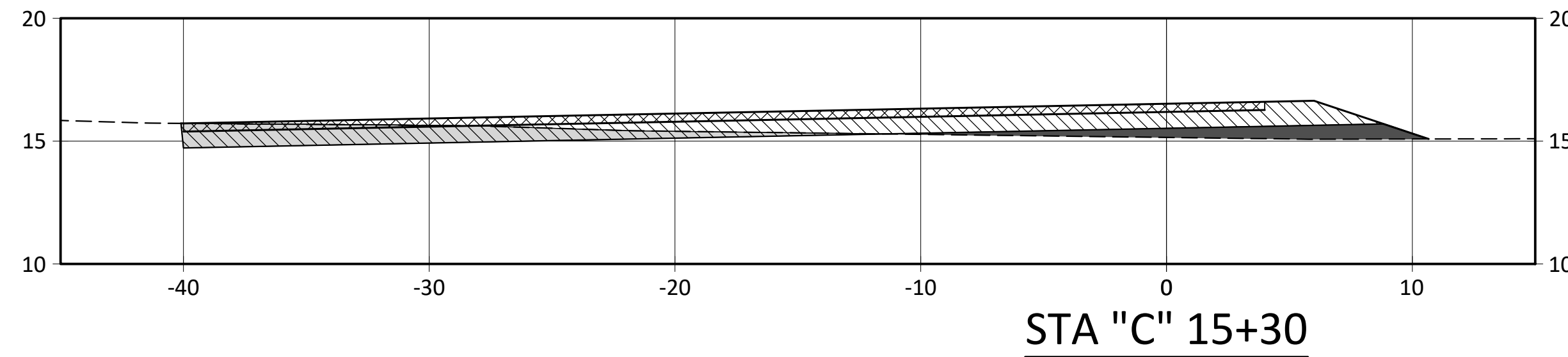
STA 14+75		
TYPE	AREA	VOL
CUT	10.43	10.90
FILL	3.80	2.21



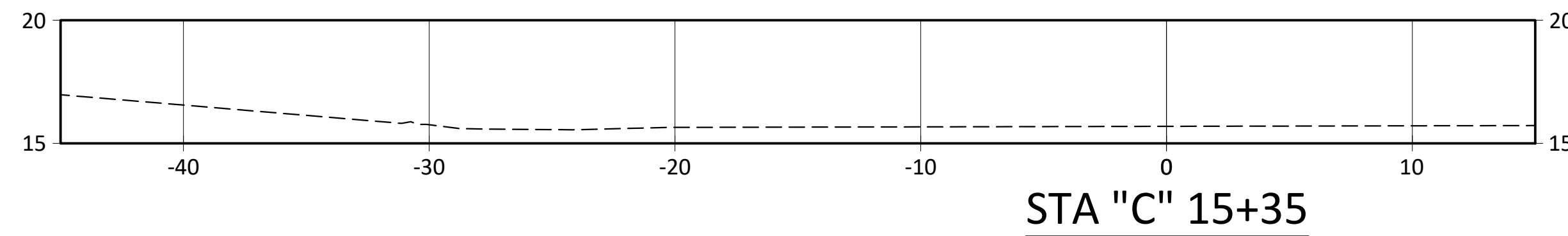
STA 15+00		
TYPE	AREA	VOL
CUT	15.66	12.08
FILL	7.69	5.32



STA 15+20		
TYPE	AREA	VOL
CUT	15.23	11.44
FILL	12.54	7.49



STA 15+29.90		
TYPE	AREA	VOL
CUT	14.87	5.52
FILL	7.18	3.62



STA 15+35		
TYPE	AREA	VOL
CUT	0.00	1.40
FILL	0.00	0.68

VOLUME

SURFACE TO SURFACE COMPOSITE:
 CUT VOLUME = 251 CY
 FILL VOLUME = 150 CY
 8" AGGREGATE BASE COURSE VOLUME = 944 TONS
 4" HMA ASPHALT PAVEMENT VOLUME = 430 TONS

LEGEND

- COMPACTED FILL MATERIAL
- 4" HMA ASPHALT PAVEMENT
- EXCAVATED CUT
- 8" AGGREGATE BASE COURSE

NOTE:
 QUANTITIES SHOWN ABOVE ARE FROM CIVIL 3D MODEL AND ACCURATELY REPRESENT MATERIAL VOLUMES. DO NOT USE SECTION QUANTITIES SHOWN TO PERFORM END-AREA VOLUME CALCULATIONS DUE TO SIGNIFICANT WIDTH VARIATIONS BETWEEN STATIONS SHOWN, SMALL RADIUS CURVES AND RADII USED AT INTERSECTION.

FINAL



DATE: 06/24/2022
 THIS WORK WAS PREPARED BY ME OR UNDER MY RESPONSIBLE CONTROL

DRAWING REVISIONS			
REVISION	DATE	BY	DESCRIPTION

DESIGNER VHN
DETAILER JDM
CHECKER JNR
DATE 06/24/22

THIS WORK WAS PREPARED BY

wsp
 WSP USA Inc.
 590 South Marine Corps Dr.
 Suite 421
 Tamuning, Guam 96913
 TEL: (671) 646-2927



DIVISION OF HIGHWAYS
 GUAM DEPARTMENT OF PUBLIC WORKS
 542 N. MARINE CORPS DRIVE TAMUNING, GU 96913

DEPT OF PUBLIC WORKS HIGHWAY GOVT OF GUAM
 PORT AUTHORITY OF GUAM AUTO LOT EXPANSION
 AND SHARED ACCESS ROAD PAVEMENT
 SECTIONS - EARTHWORK, SHEET 4
 (OPTION B)

VILLAGE	TERRITORY	PROJECT NO.	DRAWING	SHEET NO.	TOTAL SHEETS
PITI	GUAM	GU-PAG-0011 (010)	C-604	25	28